

# AVERAGE WEEKLY EARNINGS

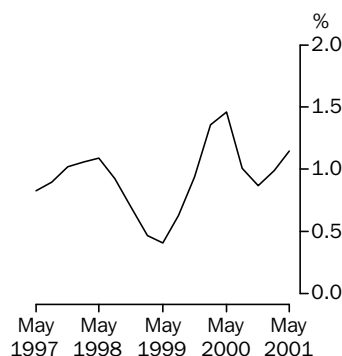
AUSTRALIA

EMBARGO: 11:30AM (CANBERRA TIME) THURS 16 AUG 2001

## MAY 2001 KEY FIGURES

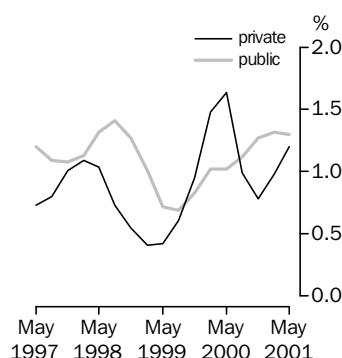
### Full-time adult total earnings

Quarterly % change in trend estimates  
All Sectors



### Full-time adult total earnings

Quarterly % change in trend estimates  
Private and Public



### TREND ESTIMATES

	May 2001 \$	Feb 2001 to May 2001 % change	May 2000 to May 2001 % change
<b>Australia</b>			
Full-time adult ordinary time earnings	822.30	1.2	4.7
Full-time adult total earnings	857.70	1.2	4.1
All employees total earnings	663.10	1.1	4.4
<b>Private sector</b>			
Full-time adult ordinary time earnings	792.60	1.2	4.8
Full-time adult total earnings	830.60	1.2	4.1
<b>Public sector</b>			
Full-time adult ordinary time earnings	923.30	1.3	5.2
Full-time adult total earnings	953.10	1.3	5.1

### SEASONALLY ADJUSTED ESTIMATES

<b>Australia</b>			
Full-time adult ordinary time earnings	826.30	2.2	5.3
Full-time adult total earnings	862.60	2.1	4.8
All employees total earnings	664.50	1.1	4.4
<b>Private sector</b>			
Full-time adult ordinary time earnings	797.70	2.6	5.6
Full-time adult total earnings	837.40	2.8	5.0
<b>Public sector</b>			
Full-time adult ordinary time earnings	923.30	1.1	5.2
Full-time adult total earnings	952.00	0.8	5.0

## MAY 2001 KEY POINTS

### TREND ESTIMATES

- Full-time adult ordinary time earnings for males and females rose by 4.3% and 5.3% respectively in the twelve months to May 2001.
- In the twelve months to May 2001, full-time adult total earnings for males and females rose by 3.6% and 4.8% respectively.
- Full-time adult ordinary time earnings for the private and public sectors rose by 4.8% and 5.2% respectively in the twelve months to May 2001.

**TAKE CARE!**  
For effects of  
compositional change  
see paragraphs 10 & 11  
of the Explanatory Notes.

- For further information about these and related statistics, contact Glynis Orrell on Perth 08 9360 5304 or the National Information and Referral Service on 1300 135 070.

# NOTES

## FORTHCOMING ISSUES

### REFERENCE PERIOD

### EXPECTED RELEASE DATE

August 2001

15 November 2001

November 2001

21 February 2002



## NOTES ON ESTIMATES

Movements in average weekly earnings can be affected by both changes in the level of earnings per employee and changes in the composition of the labour force. For example, changes in the proportions of full-time, part-time, casual and junior employees and variations in the distribution of occupations can affect movements in earnings series. Refer to paragraphs 10 and 11 of the Explanatory Notes.



## SAMPLING ERRORS

For information on sampling errors see the Technical Notes at the end of this publication. Standard errors for the original estimates contained in this publication are in tables A, B and C of the Technical Notes.



## SYMBOLS AND OTHER USAGES

ABS	Australian Bureau of Statistics
ANZSIC	Australian and New Zealand Standard Industrial Classification
AWE	Average Weekly Earnings
SEE	Survey of Employment and Earnings



Dennis Trewin  
Australian Statistician

# C O N T E N T S

	page
EDITORIAL	
Notes .....	2
TABLES	
Average Weekly Earnings	
1 Australia: Trend .....	4
2 Australia: Seasonally Adjusted .....	5
3 Australia: Original .....	6
4 Private Sector, Australia: Trend .....	7
5 Private Sector, Australia: Seasonally Adjusted .....	8
6 Private Sector, Australia: Original .....	9
7 Public Sector, Australia: Trend .....	10
8 Public Sector, Australia: Seasonally Adjusted .....	11
9 Public Sector, Australia: Original .....	12
10 Industry, Australia: Original .....	13
11 States and Territories: Trend .....	14
12 States and Territories: Seasonally Adjusted .....	16
13 States and Territories: Original .....	18
14 Quarterly Percentage Change, States and Territories: Trend .....	20
15 Quarterly Percentage Change, States and Territories: Seasonally Adjusted .	21
16 Quarterly Percentage Change, States and Territories: Original .....	22
17 Annual Percentage Change, States and Territories: Trend .....	23
ADDITIONAL INFORMATION	
Explanatory notes .....	24
Technical notes .....	28
Special data service .....	32
Glossary .....	33

## AVERAGE WEEKLY EARNINGS, Australia: **Trend**

Reference period	MALES.....			FEMALES.....			PERSONS.....		
	Full-time adult ordinary time earnings	Full-time adult total earnings	All males total earnings	Full-time adult ordinary time earnings	Full-time adult total earnings	All females total earnings	Full-time adult ordinary time earnings	Full-time adult total earnings	All employees total earnings
DOLLARS									
<b>2000</b>									
February	822.50	875.50	749.10	690.50	705.50	493.40	773.30	812.20	623.80
May	835.70	887.70	759.90	700.00	716.00	503.50	785.50	824.00	635.30
August	844.10	893.90	766.50	709.70	726.00	512.30	794.80	832.40	643.70
November	851.60	900.00	772.30	719.00	734.30	518.40	803.20	839.60	649.90
<b>2001</b>									
February	860.70	908.70	779.60	728.00	742.10	523.20	812.30	847.90	656.20
May	871.40	920.10	788.50	737.00	750.30	527.50	822.30	857.70	663.10
PERCENTAGE CHANGE (from previous quarter)									
<b>2000</b>									
February	1.6	1.5	1.4	1.2	1.3	1.7	1.4	1.4	1.6
May	1.6	1.4	1.4	1.4	1.5	2.0	1.6	1.5	1.8
August	1.0	0.7	0.9	1.4	1.4	1.7	1.2	1.0	1.3
November	0.9	0.7	0.8	1.3	1.1	1.2	1.1	0.9	1.0
<b>2001</b>									
February	1.1	1.0	0.9	1.3	1.1	0.9	1.1	1.0	1.0
May	1.2	1.3	1.1	1.2	1.1	0.8	1.2	1.2	1.1
PERCENTAGE CHANGE (from corresponding quarter of previous year)									
<b>1999</b>									
May	2.4	2.0	1.6	3.7	3.7	2.1	2.8	2.5	1.5
<b>2000</b>									
May	5.1	4.5	4.2	4.3	4.4	4.8	4.8	4.5	4.5
<b>2001</b>									
May	4.3	3.6	3.8	5.3	4.8	4.7	4.7	4.1	4.4

AVERAGE WEEKLY EARNINGS, Australia: **Seasonally Adjusted**

Reference period	MALES.....			FEMALES.....			PERSONS.....		
	Full-time adult ordinary time earnings	Full-time adult total earnings	All males total earnings	Full-time adult ordinary time earnings	Full-time adult total earnings	All females total earnings	Full-time adult ordinary time earnings	Full-time adult total earnings	All employees total earnings
DOLLARS									
<b>2000</b>									
February	822.90	874.90	748.10	689.90	703.30	492.10	773.30	811.30	622.30
May	835.40	887.70	760.40	699.20	715.90	505.10	784.60	822.90	636.50
August	846.80	898.60	770.10	711.70	729.20	514.70	797.90	837.40	647.30
November	850.50	896.00	769.00	718.40	732.60	513.90	802.40	836.70	645.80
<b>2001</b>									
February	856.60	904.60	777.70	726.80	741.10	527.90	808.70	844.60	657.00
May	876.20	926.40	792.30	738.50	752.20	525.10	826.30	862.60	664.50
PERCENTAGE CHANGE (from previous quarter)									
<b>2000</b>									
February	1.5	1.1	1.0	1.0	0.8	1.7	1.3	1.0	1.3
May	1.5	1.5	1.6	1.3	1.8	2.6	1.5	1.4	2.3
August	1.4	1.2	1.3	1.8	1.9	1.9	1.7	1.8	1.7
November	0.4	-0.3	-0.2	0.9	0.5	-0.1	0.6	-0.1	-0.2
<b>2001</b>									
February	0.7	1.0	1.1	1.2	1.2	2.7	0.8	0.9	1.7
May	2.3	2.4	1.9	1.6	1.5	-0.5	2.2	2.1	1.1
PERCENTAGE CHANGE (from corresponding quarter of previous year)									
<b>1999</b>									
May	3.3	2.9	2.6	3.6	3.5	3.1	3.4	3.0	2.5
<b>2000</b>									
May	4.3	3.7	3.4	4.3	4.6	4.5	4.3	3.9	3.9
<b>2001</b>									
May	4.9	4.4	4.2	5.6	5.1	3.9	5.3	4.8	4.4

AVERAGE WEEKLY EARNINGS, Australia: **Original**

Reference period	MALES.....			FEMALES.....			PERSONS.....		
	<i>Full-time adult ordinary time earnings</i>	<i>Full-time adult total earnings</i>	<i>All males total earnings</i>	<i>Full-time adult ordinary time earnings</i>	<i>Full-time adult total earnings</i>	<i>All females total earnings</i>	<i>Full-time adult ordinary time earnings</i>	<i>Full-time adult total earnings</i>	<i>All employees total earnings</i>
DOLLARS									
<b>2000</b>									
February	824.50	874.50	750.80	691.40	704.10	494.60	775.00	811.20	625.50
May	832.80	884.90	757.70	697.90	714.50	504.80	782.60	821.50	634.70
August	848.30	899.30	769.60	710.90	728.50	514.10	798.10	836.80	646.80
November	850.10	898.70	769.50	719.00	734.00	512.20	802.50	838.90	644.80
<b>2001</b>									
February	858.30	904.20	780.50	728.40	741.80	530.50	810.60	844.50	660.30
May	873.30	923.40	789.40	737.10	750.60	524.70	824.10	861.00	662.60
PERCENTAGE CHANGE (from previous quarter)									
<b>2000</b>									
February	1.7	0.8	1.3	1.2	0.8	2.5	1.5	0.8	2.0
May	1.0	1.2	0.9	0.9	1.5	2.1	1.0	1.3	1.5
August	1.9	1.6	1.6	1.9	2.0	1.8	2.0	1.9	1.9
November	0.2	-0.1	0.0	1.1	0.8	-0.4	0.5	0.2	-0.3
<b>2001</b>									
February	1.0	0.6	1.4	1.3	1.1	3.6	1.0	0.7	2.4
May	1.7	2.1	1.1	1.2	1.2	-1.1	1.7	2.0	0.3
PERCENTAGE CHANGE (from corresponding quarter of previous year)									
<b>1999</b>									
May	3.3	2.8	2.6	3.5	3.5	3.1	3.3	3.0	2.5
<b>2000</b>									
May	4.3	3.7	3.4	4.2	4.5	4.5	4.2	3.9	3.9
<b>2001</b>									
May	4.9	4.3	4.2	5.6	5.1	3.9	5.3	4.8	4.4

# 4

## AVERAGE WEEKLY EARNINGS, Private Sector—Australia: **Trend**

Reference period	MALES.....			FEMALES.....			PERSONS.....		
	<i>Full-time adult ordinary time earnings</i>	<i>Full-time adult total earnings</i>	<i>All males total earnings</i>	<i>Full-time adult ordinary time earnings</i>	<i>Full-time adult total earnings</i>	<i>All females total earnings</i>	<i>Full-time adult ordinary time earnings</i>	<i>Full-time adult total earnings</i>	<i>All employees total earnings</i>
DOLLARS									
<b>2000</b>									
February	796.00	851.30	714.90	646.20	662.20	445.50	743.70	785.40	586.10
May	809.60	864.20	726.40	656.20	673.50	456.10	756.60	798.30	598.90
August	818.10	869.80	733.00	665.80	683.30	464.90	766.20	806.10	607.90
November	825.40	874.80	738.50	674.30	690.40	470.50	774.30	812.40	613.70
<b>2001</b>									
February	834.10	883.20	745.70	682.40	696.90	474.30	782.90	820.40	619.60
May	844.90	895.10	755.40	690.30	703.40	477.10	792.60	830.60	626.40
PERCENTAGE CHANGE (from previous quarter)									
<b>2000</b>									
February	1.5	1.5	1.4	1.3	1.5	2.0	1.4	1.5	1.8
May	1.7	1.5	1.6	1.6	1.7	2.4	1.7	1.6	2.2
August	1.1	0.6	0.9	1.5	1.5	1.9	1.3	1.0	1.5
November	0.9	0.6	0.7	1.3	1.0	1.2	1.1	0.8	1.0
<b>2001</b>									
February	1.1	1.0	1.0	1.2	0.9	0.8	1.1	1.0	1.0
May	1.3	1.3	1.3	1.2	0.9	0.6	1.2	1.2	1.1
PERCENTAGE CHANGE (from corresponding quarter of previous year)									
<b>1999</b>									
May	2.1	1.6	1.4	3.5	3.4	2.3	2.5	2.1	1.4
<b>2000</b>									
May	5.1	4.6	4.3	4.7	5.0	5.3	5.0	4.8	4.9
<b>2001</b>									
May	4.4	3.6	4.0	5.2	4.4	4.6	4.8	4.1	4.6

AVERAGE WEEKLY EARNINGS, Private Sector—Australia: **Seasonally Adjusted**

Reference period	MALES.....			FEMALES.....			PERSONS.....		
	Full-time adult ordinary time earnings	Full-time adult total earnings	All males total earnings	Full-time adult ordinary time earnings	Full-time adult total earnings	All females total earnings	Full-time adult ordinary time earnings	Full-time adult total earnings	All employees total earnings
DOLLARS									
<b>2000</b>									
February	795.30	849.90	712.90	646.60	661.00	444.60	743.30	783.90	584.20
May	809.70	864.70	727.50	655.00	672.90	458.00	755.50	797.80	600.40
August	821.40	875.20	737.40	667.80	687.20	466.90	769.60	811.40	612.00
November	824.70	871.00	735.10	674.30	688.30	466.00	774.30	810.00	609.60
<b>2001</b>									
February	828.30	876.90	741.90	680.80	696.00	480.00	777.70	814.80	619.60
May	851.00	903.50	761.10	691.90	705.30	473.60	797.70	837.40	628.40
PERCENTAGE CHANGE (from previous quarter)									
<b>2000</b>									
February	1.2	1.0	0.9	1.4	1.3	2.1	1.3	1.0	1.5
May	1.8	1.7	2.0	1.3	1.8	3.0	1.6	1.8	2.8
August	1.4	1.2	1.4	2.0	2.1	1.9	1.9	1.7	1.9
November	0.4	-0.5	-0.3	1.0	0.2	-0.2	0.6	-0.2	-0.4
<b>2001</b>									
February	0.4	0.7	0.9	1.0	1.1	3.0	0.4	0.6	1.6
May	2.7	3.0	2.6	1.6	1.3	-1.3	2.6	2.8	1.4
PERCENTAGE CHANGE (from corresponding quarter of previous year)									
<b>1999</b>									
May	3.2	2.7	2.8	3.4	3.4	3.7	3.2	2.8	2.8
<b>2000</b>									
May	4.1	3.6	3.4	4.4	4.9	4.7	4.2	4.0	4.1
<b>2001</b>									
May	5.1	4.5	4.6	5.6	4.8	3.4	5.6	5.0	4.7

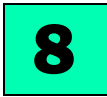


AVERAGE WEEKLY EARNINGS, Private Sector—Australia: **Original**

Reference period	MALES.....			FEMALES.....			PERSONS.....		
	Full-time adult ordinary time earnings	Full-time adult total earnings	All males total earnings	Full-time adult ordinary time earnings	Full-time adult total earnings	All females total earnings	Full-time adult ordinary time earnings	Full-time adult total earnings	All employees total earnings
DOLLARS									
<b>2000</b>									
February	796.90	849.40	714.50	647.60	660.70	445.60	744.80	783.60	586.00
May	806.70	860.70	724.40	653.20	671.00	457.80	753.30	794.70	598.60
August	823.80	877.00	737.70	667.50	687.00	467.40	770.90	812.70	612.50
November	823.70	873.70	736.10	675.40	690.90	464.70	773.80	812.20	609.00
<b>2001</b>									
February	829.90	876.40	743.60	681.90	695.60	480.90	779.30	814.50	621.50
May	847.90	899.30	757.90	690.00	703.30	473.50	795.30	834.00	626.60
PERCENTAGE CHANGE (from previous quarter)									
<b>2000</b>									
February	1.6	0.6	1.0	1.4	0.9	2.6	1.5	0.7	1.9
May	1.2	1.3	1.4	0.9	1.6	2.7	1.1	1.4	2.1
August	2.1	1.9	1.8	2.2	2.4	2.1	2.3	2.3	2.3
November	0.0	-0.4	-0.2	1.2	0.6	-0.6	0.4	-0.1	-0.6
<b>2001</b>									
February	0.8	0.3	1.0	1.0	0.7	3.5	0.7	0.3	2.1
May	2.2	2.6	1.9	1.2	1.1	-1.6	2.1	2.4	0.8
PERCENTAGE CHANGE (from corresponding quarter of previous year)									
<b>1999</b>									
May	3.2	2.7	2.7	3.4	3.4	3.7	3.2	2.8	2.7
<b>2000</b>									
May	4.1	3.6	3.3	4.4	4.9	4.7	4.2	4.0	4.1
<b>2001</b>									
May	5.1	4.5	4.6	5.6	4.8	3.4	5.6	5.0	4.7

AVERAGE WEEKLY EARNINGS, Public Sector—Australia: **Trend**

Reference period	MALES.....			FEMALES.....			PERSONS.....		
	<i>Full-time adult ordinary time earnings</i>	<i>Full-time adult total earnings</i>	<i>All males total earnings</i>	<i>Full-time adult ordinary time earnings</i>	<i>Full-time adult total earnings</i>	<i>All females total earnings</i>	<i>Full-time adult ordinary time earnings</i>	<i>Full-time adult total earnings</i>	<i>All employees total earnings</i>
DOLLARS									
<b>2000</b>									
February	921.10	965.50	897.10	800.80	813.50	657.20	867.50	897.80	768.20
May	934.20	976.80	906.20	808.20	820.90	661.40	877.70	907.00	774.10
August	945.50	988.20	916.40	817.70	830.80	667.70	887.90	917.20	781.10
November	956.80	1 000.20	926.80	829.20	842.60	676.30	899.00	928.80	789.90
<b>2001</b>									
February	968.80	1 012.30	935.60	841.60	855.20	685.90	911.10	941.00	799.00
May	980.60	1 023.50	941.60	854.70	868.40	695.50	923.30	953.10	807.30
PERCENTAGE CHANGE (from previous quarter)									
<b>2000</b>									
February	1.6	1.3	1.2	0.8	0.7	0.7	1.2	1.0	0.9
May	1.4	1.2	1.0	0.9	0.9	0.6	1.2	1.0	0.8
August	1.2	1.2	1.1	1.2	1.2	0.9	1.2	1.1	0.9
November	1.2	1.2	1.1	1.4	1.4	1.3	1.2	1.3	1.1
<b>2001</b>									
February	1.3	1.2	1.0	1.5	1.5	1.4	1.3	1.3	1.2
May	1.2	1.1	0.6	1.6	1.5	1.4	1.3	1.3	1.0
PERCENTAGE CHANGE (from corresponding quarter of previous year)									
<b>1999</b>									
May	4.4	4.2	3.4	5.2	5.2	3.6	4.7	4.5	3.2
<b>2000</b>									
May	5.4	4.4	4.2	3.1	2.9	2.8	4.3	3.6	3.2
<b>2001</b>									
May	5.0	4.8	3.9	5.7	5.8	5.1	5.2	5.1	4.3



AVERAGE WEEKLY EARNINGS, Public Sector—Australia: **Seasonally Adjusted**

Reference period	MALES.....			FEMALES.....			PERSONS.....		
	Full-time adult ordinary time earnings	Full-time adult total earnings	All males total earnings	Full-time adult ordinary time earnings	Full-time adult total earnings	All females total earnings	Full-time adult ordinary time earnings	Full-time adult total earnings	All employees total earnings
DOLLARS									
<b>2000</b>									
February	924.30	967.50	901.50	798.00	810.30	656.80	868.10	897.70	769.60
May	933.10	975.20	903.50	810.00	822.90	661.80	877.90	907.10	773.70
August	946.50	990.30	916.60	818.60	831.30	668.40	888.90	918.40	781.40
November	954.70	996.50	924.00	825.90	839.90	672.80	896.20	925.30	786.50
<b>2001</b>									
February	970.30	1 016.40	943.50	843.90	857.30	689.50	913.00	944.40	804.30
May	980.50	1 021.70	935.40	854.60	868.20	694.20	923.30	952.00	804.30
PERCENTAGE CHANGE (from previous quarter)									
<b>2000</b>									
February	2.2	1.5	1.9	0.3	0.2	0.7	1.4	1.0	1.1
May	0.9	0.8	0.2	1.5	1.6	0.8	1.1	1.0	0.5
August	1.4	1.6	1.5	1.1	1.0	1.0	1.2	1.3	1.0
November	0.9	0.6	0.8	0.9	1.0	0.7	0.8	0.7	0.6
<b>2001</b>									
February	1.6	2.0	2.1	2.2	2.1	2.5	1.9	2.1	2.3
May	1.0	0.5	-0.9	1.3	1.3	0.7	1.1	0.8	0.0
PERCENTAGE CHANGE (from corresponding quarter of previous year)									
<b>1999</b>									
May	4.6	4.3	3.5	5.1	5.1	3.8	4.7	4.5	3.3
<b>2000</b>									
May	5.3	4.2	3.9	3.5	3.5	3.1	4.4	3.7	3.2
<b>2001</b>									
May	5.1	4.8	3.5	5.5	5.5	4.9	5.2	5.0	4.0



AVERAGE WEEKLY EARNINGS, Public Sector—Australia: **Original**

Reference period	MALES.....			FEMALES.....			PERSONS.....		
	<i>Full-time adult ordinary time earnings</i>	<i>Full-time adult total earnings</i>	<i>All males total earnings</i>	<i>Full-time adult ordinary time earnings</i>	<i>Full-time adult total earnings</i>	<i>All females total earnings</i>	<i>Full-time adult ordinary time earnings</i>	<i>Full-time adult total earnings</i>	<i>All employees total earnings</i>
DOLLARS									
<b>2000</b>									
February	926.90	967.80	909.30	800.70	812.30	665.90	870.90	898.80	779.50
May	931.80	976.80	903.40	809.40	822.90	661.10	876.80	907.70	772.40
August	944.20	986.20	911.40	816.10	829.10	662.30	886.20	915.10	775.10
November	955.80	998.70	921.40	826.30	840.00	670.40	897.20	926.90	784.00
<b>2001</b>									
February	973.10	1 016.80	951.70	846.80	859.60	699.10	916.00	945.70	814.70
May	978.90	1 023.30	935.30	853.80	868.00	693.30	921.90	952.50	802.80
PERCENTAGE CHANGE (from previous quarter)									
<b>2000</b>									
February	2.4	1.4	3.1	0.6	0.5	2.4	1.6	1.0	2.8
May	0.5	0.9	-0.7	1.1	1.3	-0.7	0.7	1.0	-0.9
August	1.3	1.0	0.9	0.8	0.7	0.2	1.1	0.8	0.4
November	1.2	1.3	1.1	1.3	1.3	1.2	1.2	1.3	1.2
<b>2001</b>									
February	1.8	1.8	3.3	2.5	2.3	4.3	2.1	2.0	3.9
May	0.6	0.6	-1.7	0.8	1.0	-0.8	0.6	0.7	-1.5
PERCENTAGE CHANGE (from corresponding quarter of previous year)									
<b>1999</b>									
May	4.5	4.2	3.4	5.1	5.0	3.7	4.6	4.4	3.3
<b>2000</b>									
May	5.3	4.2	3.9	3.5	3.4	3.1	4.4	3.7	3.2
<b>2001</b>									
May	5.1	4.8	3.5	5.5	5.5	4.9	5.1	4.9	3.9

AVERAGE WEEKLY EARNINGS, Industry—Australia: **Original**

Industry	MALES.....			FEMALES.....			PERSONS.....		
	<i>Full-time adult ordinary time earnings</i>	<i>Full-time adult total earnings</i>	<i>All males total earnings</i>	<i>Full-time adult ordinary time earnings</i>	<i>Full-time adult total earnings</i>	<i>All females total earnings</i>	<i>Full-time adult ordinary time earnings</i>	<i>Full-time adult total earnings</i>	<i>All employees total earnings</i>
DOLLARS									
Mining	1 385.90	1 499.50	1 477.80	965.10	993.20	900.90	1 343.70	1 448.80	1 411.70
Manufacturing	780.60	855.70	817.40	637.30	670.50	579.40	749.20	815.10	756.70
Electricity, gas and water supply	1 046.90	1 142.30	1 122.90	884.90	909.60	818.00	1 025.00	1 110.80	1 072.80
Construction	741.40	816.80	753.20	568.50	579.10	474.00	719.00	785.90	706.60
Wholesale trade	838.50	869.30	812.40	715.70	723.30	602.00	802.60	826.60	739.50
Retail trade	636.90	678.50	480.10	573.90	591.70	315.40	615.20	648.60	393.40
Accommodation, cafes and restaurants	673.30	684.80	446.00	601.90	609.00	341.40	646.90	656.80	391.00
Transport and storage	880.10	969.10	890.60	700.10	722.10	585.10	839.50	913.40	805.10
Communication services	988.70	1 024.80	982.60	852.30	867.30	740.80	948.10	977.90	897.20
Finance and insurance	1 217.80	1 228.30	1 159.90	786.70	796.60	681.20	991.40	1 001.50	878.20
Property and business services	1 001.60	1 033.70	892.70	725.70	732.60	568.80	890.00	912.00	739.00
Government administration and defence	937.80	968.20	912.10	816.90	831.10	682.90	888.40	912.20	801.80
Education	1 024.50	1 029.20	826.20	883.40	885.90	628.00	940.00	943.40	692.80
Health and community services	960.20	1 004.60	842.20	781.50	798.70	555.90	841.00	867.30	617.00
Cultural and recreational services	858.60	878.40	584.30	747.10	757.50	406.30	817.30	833.60	496.90
Personal and other services	886.90	944.70	789.60	688.50	707.40	453.00	818.50	862.90	619.80
<b>All industries</b>	<b>873.30</b>	<b>923.40</b>	<b>789.40</b>	<b>737.10</b>	<b>750.60</b>	<b>524.70</b>	<b>824.10</b>	<b>861.00</b>	<b>662.60</b>

## PERCENTAGE CHANGE (from corresponding quarter of previous year)

Mining	4.8	6.1	5.8	4.7	6.7	3.8	4.9	6.3	5.8
Manufacturing	3.4	1.4	2.4	1.0	-0.1	-1.9	3.0	1.1	1.4
Electricity, gas and water supply	7.0	7.4	7.1	7.6	7.8	8.0	7.2	7.6	7.4
Construction	-2.7	-2.0	-3.6	1.7	2.3	3.9	-2.0	-1.4	-1.9
Wholesale trade	4.5	4.5	5.7	10.3	9.7	10.4	5.5	5.4	6.2
Retail trade	-0.1	1.2	1.4	5.0	5.1	0.1	2.0	2.9	0.8
Accommodation, cafes and restaurants	7.0	5.7	0.1	6.0	5.1	4.1	6.6	5.4	2.4
Transport and storage	4.5	4.0	4.2	3.4	1.0	-0.6	4.6	3.7	2.9
Communication services	2.6	1.1	0.6	4.6	3.6	2.8	3.0	1.5	0.9
Finance and insurance	0.9	0.5	0.8	6.1	5.6	10.2	3.7	3.2	6.6
Property and business services	10.9	9.7	10.0	7.9	6.4	8.5	9.8	8.4	9.3
Government administration and defence	6.2	6.0	4.3	5.5	5.4	3.3	5.8	5.7	3.6
Education	7.9	7.8	5.4	6.4	6.5	6.1	7.1	7.1	6.1
Health and community services	6.5	6.3	5.9	4.1	4.0	2.0	5.6	5.6	3.9
Cultural and recreational services	6.4	6.0	15.1	4.8	4.9	7.2	6.3	6.1	12.3
Personal and other services	6.6	6.6	1.9	8.8	8.7	-4.3	8.0	8.0	-0.9
<b>All industries</b>	<b>4.9</b>	<b>4.3</b>	<b>4.2</b>	<b>5.6</b>	<b>5.1</b>	<b>3.9</b>	<b>5.3</b>	<b>4.8</b>	<b>4.4</b>

AVERAGE WEEKLY EARNINGS, States and Territories: **Trend**

Reference period	MALES.....			FEMALES.....			PERSONS.....		
	Full-time adult ordinary time earnings	Full-time adult total earnings	All males total earnings	Full-time adult ordinary time earnings	Full-time adult total earnings	All females total earnings	Full-time adult ordinary time earnings	Full-time adult total earnings	All employees total earnings
NEW SOUTH WALES									
<b>2000</b>									
February	873.20	931.50	795.90	714.50	731.30	524.40	812.90	855.40	663.50
May	888.70	945.20	806.70	722.40	741.00	536.60	825.40	867.50	676.30
August	896.30	949.80	813.90	730.70	749.30	545.20	833.50	873.80	685.10
November	902.40	954.30	819.80	740.20	757.10	550.60	841.40	880.10	691.40
<b>2001</b>									
February	911.60	963.90	826.30	750.70	765.90	554.10	851.50	890.00	696.80
May	924.70	978.60	833.60	762.30	776.30	556.20	864.60	903.90	702.00
VICTORIA									
<b>2000</b>									
February	791.90	843.40	730.80	700.90	716.50	494.80	759.60	798.00	616.30
May	802.10	852.70	740.30	708.20	724.20	502.30	768.70	806.90	625.10
August	809.00	856.50	741.30	716.50	732.60	511.50	775.90	812.30	630.70
November	815.40	860.50	741.30	724.10	739.40	518.20	782.80	817.60	634.10
<b>2001</b>									
February	823.40	868.10	746.50	730.70	745.20	522.10	790.80	824.50	638.40
May	832.20	878.20	757.00	736.40	750.30	524.60	798.90	832.90	644.40
QUEENSLAND									
<b>2000</b>									
February	761.90	812.90	697.60	642.30	653.30	473.10	717.40	753.50	591.10
May	774.70	825.90	708.00	655.30	666.90	482.50	730.90	767.60	602.40
August	786.40	834.60	719.50	666.10	678.40	490.00	743.90	779.50	612.80
November	796.20	842.30	729.60	675.00	687.90	495.50	754.10	788.60	620.80
<b>2001</b>									
February	803.50	850.00	737.10	686.10	699.00	502.30	762.10	796.70	628.20
May	809.70	858.30	742.60	698.30	711.00	510.20	768.90	804.30	635.00
SOUTH AUSTRALIA									
<b>2000</b>									
February	760.60	817.90	700.60	643.90	664.30	458.40	717.60	761.20	578.90
May	776.70	834.20	713.10	654.70	676.20	468.20	731.60	775.50	590.70
August	793.00	848.50	727.40	667.90	689.70	480.20	746.70	789.90	604.20
November	806.50	860.00	742.20	680.00	699.60	489.30	760.20	801.60	616.30
<b>2001</b>									
February	817.50	870.00	752.80	690.50	707.40	494.40	772.10	811.80	624.70
May	826.00	878.40	759.80	700.10	715.50	496.40	782.50	821.20	629.80

Reference period	MALES.....			FEMALES.....			PERSONS.....		
	Full-time adult ordinary time earnings	Full-time adult total earnings	All males total earnings	Full-time adult ordinary time earnings	Full-time adult total earnings	All females total earnings	Full-time adult ordinary time earnings	Full-time adult total earnings	All employees total earnings
WESTERN AUSTRALIA									
<b>2000</b>									
February	858.20	908.60	757.30	666.00	676.40	433.60	788.50	824.50	591.00
May	870.50	918.00	768.10	678.40	688.40	443.30	801.70	835.90	603.70
August	878.30	927.20	777.80	689.70	700.50	451.50	812.20	847.70	615.10
November	885.60	936.70	787.00	697.10	708.60	456.20	820.30	857.50	623.10
<b>2001</b>									
February	895.00	946.20	795.60	700.00	711.50	459.70	827.20	864.70	629.70
May	905.60	954.80	803.10	700.10	711.00	463.90	833.40	869.70	636.10
TASMANIA									
<b>2000</b>									
February	771.90	807.10	684.80	639.40	655.60	434.60	725.30	754.10	558.30
May	782.20	818.90	689.10	644.70	662.30	431.00	735.20	765.00	557.90
August	786.60	825.20	687.80	650.30	667.90	428.50	739.30	770.40	553.50
November	785.40	823.30	681.90	660.70	677.00	436.30	740.70	771.10	554.30
<b>2001</b>									
February	785.10	818.90	676.80	674.90	689.40	450.50	745.20	772.40	561.70
May	787.70	816.30	675.00	691.20	704.00	465.20	754.50	777.00	572.80
NORTHERN TERRITORY									
<b>2000</b>									
February	839.20	885.30	724.00	716.90	735.50	542.90	787.50	822.10	635.10
May	849.90	894.00	741.00	722.90	742.50	558.40	796.20	829.40	652.50
August	856.90	902.50	755.50	729.30	749.00	565.70	803.10	837.70	665.40
November	861.10	908.70	762.40	736.30	755.20	566.80	808.60	844.60	669.30
<b>2001</b>									
February	866.50	914.90	766.40	745.20	762.80	572.20	816.10	851.80	672.40
May	874.60	921.50	769.80	755.80	772.30	582.90	826.20	859.80	677.80
AUSTRALIAN CAPITAL TERRITORY									
<b>2000</b>									
February	963.90	986.70	863.50	817.60	826.90	610.60	899.40	916.10	728.10
May	982.00	1 004.30	882.70	827.20	835.70	625.30	911.40	927.90	743.60
August	997.30	1 017.40	897.50	837.20	845.30	640.20	922.00	936.60	755.70
November	1 009.20	1 026.30	908.80	846.30	854.40	654.50	931.10	943.50	766.40
<b>2001</b>									
February	1 014.40	1 030.30	914.50	852.10	859.50	660.20	936.00	947.70	771.70
May	1 015.60	1 032.00	918.30	858.50	864.70	661.00	939.50	952.00	774.90

AVERAGE WEEKLY EARNINGS, States and Territories: **Seasonally Adjusted**

Reference period	MALES.....			FEMALES.....			PERSONS.....		
	Full-time adult ordinary time earnings	Full-time adult total earnings	All males total earnings	Full-time adult ordinary time earnings	Full-time adult total earnings	All females total earnings	Full-time adult ordinary time earnings	Full-time adult total earnings	All employees total earnings
NEW SOUTH WALES									
<b>2000</b>									
February	871.90	931.20	796.30	714.40	729.70	527.00	811.80	854.30	664.10
May	888.90	943.80	803.30	721.60	740.60	534.90	824.90	866.30	673.50
August	900.00	956.60	819.50	730.40	751.60	547.90	835.90	878.90	690.10
November	903.70	952.20	817.90	743.90	758.70	547.90	844.00	879.80	689.10
<b>2001</b>									
February	899.50	951.20	822.30	743.90	759.10	557.60	840.90	878.80	695.80
May	936.10	992.50	838.50	767.10	782.30	553.80	873.90	915.40	704.00
VICTORIA									
<b>2000</b>									
February	794.60	844.60	727.10	698.10	712.60	489.20	761.10	797.00	611.50
May	798.50	850.80	744.30	706.40	723.20	505.30	766.00	805.70	628.50
August	816.00	864.30	747.80	723.80	740.40	514.20	782.10	819.40	635.60
November	809.80	852.60	732.50	714.80	729.30	512.40	775.80	809.80	626.80
<b>2001</b>									
February	822.70	866.50	742.70	738.10	752.70	529.60	793.90	825.80	640.50
May	836.10	884.40	766.00	734.00	748.20	520.10	799.80	836.00	646.50
QUEENSLAND									
<b>2000</b>									
February	760.30	811.00	697.80	645.60	656.70	473.00	718.80	755.00	591.80
May	769.50	822.50	705.00	651.80	663.80	485.00	723.80	761.00	601.90
August	795.10	845.90	725.70	672.10	683.20	493.20	753.50	791.40	617.50
November	792.00	831.20	724.10	674.00	687.70	488.90	751.10	781.10	615.30
<b>2001</b>									
February	803.90	854.00	742.40	678.70	692.10	505.80	760.10	797.20	632.20
May	811.10	860.30	740.40	706.70	718.50	510.50	772.10	807.60	634.00
SOUTH AUSTRALIA									
<b>2000</b>									
February	765.30	820.70	703.40	642.10	655.90	459.40	721.30	760.50	581.30
May	773.40	833.90	705.30	653.50	678.60	463.50	728.90	775.90	585.40
August	790.60	848.50	729.20	670.50	696.10	485.60	745.90	791.70	606.70
November	815.90	861.00	748.00	679.70	693.80	487.70	765.40	800.60	619.00
<b>2001</b>									
February	810.20	870.20	749.50	690.20	709.80	497.10	768.30	812.80	624.30
May	828.30	877.90	759.90	700.40	716.00	494.20	783.40	820.70	628.60



AVERAGE WEEKLY EARNINGS, States and Territories: **Seasonally Adjusted** *continued*

Reference period	MALES.....			FEMALES.....			PERSONS.....		
	Full-time adult ordinary time earnings	Full-time adult total earnings	All males total earnings	Full-time adult ordinary time earnings	Full-time adult total earnings	All females total earnings	Full-time adult ordinary time earnings	Full-time adult total earnings	All employees total earnings
WESTERN AUSTRALIA									
<b>2000</b>									
February	860.10	911.00	760.40	664.90	675.00	427.10	788.60	825.40	587.60
May	875.40	920.60	765.90	678.80	688.50	448.90	804.10	836.60	605.50
August	873.80	920.90	777.80	688.30	699.90	451.80	810.00	844.90	617.40
November	885.10	940.00	789.00	699.20	709.60	454.80	821.40	859.90	622.50
<b>2001</b>									
February	896.40	948.00	794.00	703.60	717.00	459.70	828.50	867.70	627.70
May	904.90	951.50	804.00	694.80	704.40	464.90	831.40	865.30	638.90
TASMANIA									
<b>2000</b>									
February	764.80	796.30	678.80	636.60	653.00	438.70	717.30	745.40	558.90
May	790.20	826.20	692.30	647.10	664.30	431.20	743.20	770.90	560.10
August	787.00	827.70	691.80	650.40	667.60	426.50	740.20	772.90	554.30
November	782.80	821.90	680.10	657.40	676.60	429.60	738.60	770.20	548.40
<b>2001</b>									
February	783.20	816.30	670.60	673.90	684.90	456.20	738.90	765.80	560.50
May	790.90	818.80	681.60	695.40	709.80	466.30	762.10	783.70	578.60
NORTHERN TERRITORY									
<b>2000</b>									
February	832.30	882.90	715.10	712.00	729.10	534.60	779.80	816.60	624.30
May	855.00	897.80	753.20	732.40	753.30	577.20	804.80	836.80	667.90
August	859.00	901.10	750.80	722.40	741.20	555.90	800.90	833.00	659.70
November	858.60	908.70	760.50	737.40	757.60	571.00	807.10	845.70	670.90
<b>2001</b>									
February	862.90	914.60	772.60	745.50	761.80	563.10	814.40	852.30	669.90
May	879.90	922.10	764.80	755.80	772.70	591.00	829.40	859.30	679.60
AUSTRALIAN CAPITAL TERRITORY									
<b>2000</b>									
February	961.00	983.60	853.10	805.80	815.50	601.20	893.30	909.20	718.60
May	982.10	1 005.60	890.70	829.70	837.60	628.40	911.70	930.30	749.90
August	991.90	1 014.70	892.90	837.30	844.40	637.10	919.60	934.50	751.80
November	1 017.00	1 030.00	908.00	851.10	860.60	653.10	937.80	948.70	764.80
<b>2001</b>									
February	1 015.80	1 032.30	923.30	846.10	853.40	674.30	932.50	943.20	781.70
May	1 009.30	1 027.30	909.40	861.40	866.80	647.30	938.70	953.30	765.40

AVERAGE WEEKLY EARNINGS, States and Territories: **Original**

Reference period	MALES.....			FEMALES.....			PERSONS.....		
	Full-time adult ordinary time earnings	Full-time adult total earnings	All males total earnings	Full-time adult ordinary time earnings	Full-time adult total earnings	All females total earnings	Full-time adult ordinary time earnings	Full-time adult total earnings	All employees total earnings
NEW SOUTH WALES									
<b>2000</b>									
February	873.80	931.10	798.10	717.10	731.70	528.60	814.20	855.30	666.70
May	885.70	939.90	801.40	720.70	739.30	536.50	822.20	862.70	673.00
August	901.30	957.10	819.80	729.20	751.10	547.40	836.60	879.60	689.80
November	903.80	955.90	817.90	743.30	758.50	545.10	843.60	881.90	687.20
<b>2001</b>									
February	901.40	951.10	824.10	746.70	761.10	559.40	843.30	879.80	698.60
May	932.70	988.40	836.50	766.20	780.90	555.40	871.10	911.60	703.50
VICTORIA									
<b>2000</b>									
February	797.80	843.70	732.30	696.70	710.00	492.60	761.30	795.40	616.20
May	799.10	850.10	739.60	706.00	722.60	504.80	765.90	804.70	626.30
August	813.10	861.40	741.80	724.10	740.40	513.80	781.60	818.60	632.30
November	808.70	857.00	737.80	716.20	732.70	509.80	776.20	813.30	627.60
<b>2001</b>									
February	826.20	865.60	748.00	736.60	749.90	533.10	794.00	824.00	645.20
May	836.50	883.60	761.10	733.40	747.30	519.60	799.60	834.90	644.10
QUEENSLAND									
<b>2000</b>									
February	764.30	810.30	697.70	646.20	656.10	473.70	721.00	753.80	592.20
May	769.50	822.30	709.90	650.30	662.30	485.90	725.40	763.00	603.90
August	795.10	848.10	728.50	670.40	682.70	495.30	751.20	789.80	622.10
November	787.70	829.70	716.10	676.50	690.50	485.10	749.40	781.70	608.20
<b>2001</b>									
February	808.20	853.40	742.30	679.40	691.40	506.50	762.50	796.00	632.50
May	811.00	859.90	745.70	705.10	716.90	511.40	773.80	809.80	636.20
SOUTH AUSTRALIA									
<b>2000</b>									
February	768.60	821.20	708.30	645.30	656.80	461.30	723.00	760.30	584.50
May	770.40	831.30	705.00	651.40	677.20	462.60	726.80	774.80	585.90
August	791.60	846.00	724.80	667.70	692.60	484.00	745.50	788.90	603.60
November	814.90	866.00	748.30	681.40	698.00	488.30	766.40	805.00	618.50
<b>2001</b>									
February	813.80	870.60	754.70	693.60	710.60	499.30	770.10	812.40	627.70
May	824.80	875.00	759.10	698.00	714.20	493.00	780.90	819.30	628.90

AVERAGE WEEKLY EARNINGS, States and Territories: **Original** *continued*

Reference period	MALES.....			FEMALES.....			PERSONS.....		
	Full-time adult ordinary time earnings	Full-time adult total earnings	All males total earnings	Full-time adult ordinary time earnings	Full-time adult total earnings	All females total earnings	Full-time adult ordinary time earnings	Full-time adult total earnings	All employees total earnings
WESTERN AUSTRALIA									
<b>2000</b>									
February	856.00	906.70	761.00	670.80	680.60	433.00	789.00	824.90	591.70
May	872.20	920.90	765.10	677.80	688.70	446.90	803.00	838.20	605.50
August	878.70	922.70	778.40	687.20	697.70	451.50	811.50	843.70	615.50
November	887.80	942.50	788.50	695.20	705.70	450.80	820.70	860.00	620.10
<b>2001</b>									
February	891.60	943.10	794.40	709.90	722.90	466.10	828.80	867.00	632.00
May	901.80	952.00	803.30	693.80	704.70	462.70	830.40	867.00	638.90
TASMANIA									
<b>2000</b>									
February	767.70	799.30	686.20	639.60	656.70	444.20	723.90	750.60	566.70
May	788.10	828.20	695.80	643.40	659.10	428.00	737.20	768.80	558.10
August	784.20	819.60	677.60	645.40	660.90	422.90	736.50	765.10	547.40
November	784.60	824.70	683.20	663.40	685.10	431.00	741.30	774.80	549.50
<b>2001</b>									
February	786.20	819.50	678.00	676.90	688.80	462.00	745.80	771.20	568.40
May	788.70	820.90	685.20	691.30	704.10	462.90	755.90	781.50	576.60
NORTHERN TERRITORY									
<b>2000</b>									
February	833.50	875.70	713.10	714.20	730.90	538.20	781.80	812.90	626.90
May	854.10	901.20	755.40	728.30	749.90	571.10	801.10	837.40	667.30
August	857.40	902.00	748.30	723.00	742.80	559.50	800.10	834.20	657.30
November	860.00	911.70	763.20	738.60	757.60	569.60	809.60	847.70	671.40
<b>2001</b>									
February	864.00	907.20	770.30	748.00	763.90	566.80	816.50	848.60	672.60
May	879.00	925.70	767.10	751.40	769.00	584.70	825.50	860.00	679.00
AUSTRALIAN CAPITAL TERRITORY									
<b>2000</b>									
February	962.20	984.10	861.50	809.60	817.10	607.30	894.40	909.90	725.90
May	979.80	1 003.70	884.70	826.20	835.80	620.30	911.80	929.40	742.90
August	992.10	1 011.10	889.00	832.20	840.20	632.00	917.30	931.20	746.90
November	1 018.20	1 035.20	909.30	856.00	865.40	660.70	939.10	952.40	769.50
<b>2001</b>									
February	1 017.00	1 032.90	932.40	850.10	854.90	681.10	933.50	943.90	789.60
May	1 007.00	1 025.20	903.40	857.60	864.60	638.50	938.80	952.30	758.00

AVERAGE WEEKLY EARNINGS, Quarterly Percentage Change—States and Territories: **Trend**

Reference period	MALES.....			FEMALES.....			PERSONS.....		
	Full-time adult ordinary time earnings	Full-time adult total earnings	All males total earnings	Full-time adult ordinary time earnings	Full-time adult total earnings	All females total earnings	Full-time adult ordinary time earnings	Full-time adult total earnings	All employees total earnings
NEW SOUTH WALES									
<b>2000</b>									
November	0.7	0.5	0.7	1.3	1.0	1.0	0.9	0.7	0.9
<b>2001</b>									
February	1.0	1.0	0.8	1.4	1.2	0.6	1.2	1.1	0.8
May	1.4	1.5	0.9	1.5	1.4	0.4	1.5	1.6	0.7
VICTORIA									
<b>2000</b>									
November	0.8	0.5	0.0	1.1	0.9	1.3	0.9	0.6	0.5
<b>2001</b>									
February	1.0	0.9	0.7	0.9	0.8	0.8	1.0	0.8	0.7
May	1.1	1.2	1.4	0.8	0.7	0.5	1.0	1.0	0.9
QUEENSLAND									
<b>2000</b>									
November	1.2	0.9	1.4	1.3	1.4	1.1	1.4	1.2	1.3
<b>2001</b>									
February	0.9	0.9	1.0	1.6	1.6	1.4	1.1	1.0	1.2
May	0.8	1.0	0.7	1.8	1.7	1.6	0.9	1.0	1.1
SOUTH AUSTRALIA									
<b>2000</b>									
November	1.7	1.4	2.0	1.8	1.4	1.9	1.8	1.5	2.0
<b>2001</b>									
February	1.4	1.2	1.4	1.5	1.1	1.0	1.6	1.3	1.4
May	1.0	1.0	0.9	1.4	1.1	0.4	1.3	1.2	0.8
WESTERN AUSTRALIA									
<b>2000</b>									
November	0.8	1.0	1.2	1.1	1.2	1.0	1.0	1.2	1.3
<b>2001</b>									
February	1.1	1.0	1.1	0.4	0.4	0.8	0.8	0.8	1.1
May	1.2	0.9	0.9	0.0	-0.1	0.9	0.8	0.6	1.0
TASMANIA									
<b>2000</b>									
November	-0.1	-0.2	-0.9	1.6	1.4	1.8	0.2	0.1	0.1
<b>2001</b>									
February	0.0	-0.5	-0.7	2.2	1.8	3.3	0.6	0.2	1.3
May	0.3	-0.3	-0.3	2.4	2.1	3.3	1.2	0.6	2.0
NORTHERN TERRITORY									
<b>2000</b>									
November	0.5	0.7	0.9	1.0	0.8	0.2	0.7	0.8	0.6
<b>2001</b>									
February	0.6	0.7	0.5	1.2	1.0	0.9	0.9	0.9	0.5
May	0.9	0.7	0.5	1.4	1.3	1.9	1.2	0.9	0.8
AUSTRALIAN CAPITAL TERRITORY									
<b>2000</b>									
November	1.2	0.9	1.2	1.1	1.1	2.2	1.0	0.7	1.4
<b>2001</b>									
February	0.5	0.4	0.6	0.7	0.6	0.9	0.5	0.4	0.7
May	0.1	0.2	0.4	0.8	0.6	0.1	0.4	0.5	0.4

Reference period	MALES.....			FEMALES.....			PERSONS.....		
	Full-time adult ordinary time earnings	Full-time adult total earnings	All males total earnings	Full-time adult ordinary time earnings	Full-time adult total earnings	All females total earnings	Full-time adult ordinary time earnings	Full-time adult total earnings	All employees total earnings
NEW SOUTH WALES									
<b>2000</b>									
November	0.4	-0.5	-0.2	1.9	0.9	0.0	1.0	0.1	-0.2
<b>2001</b>									
February	-0.5	-0.1	0.5	0.0	0.1	1.8	-0.4	-0.1	1.0
May	4.1	4.3	2.0	3.1	3.1	-0.7	3.9	4.2	1.2
VICTORIA									
<b>2000</b>									
November	-0.8	-1.4	-2.1	-1.2	-1.5	-0.3	-0.8	-1.2	-1.4
<b>2001</b>									
February	1.6	1.6	1.4	3.3	3.2	3.4	2.3	2.0	2.2
May	1.6	2.1	3.1	-0.6	-0.6	-1.8	0.8	1.2	0.9
QUEENSLAND									
<b>2000</b>									
November	-0.4	-1.7	-0.2	0.3	0.7	-0.9	-0.3	-1.3	-0.4
<b>2001</b>									
February	1.5	2.7	2.5	0.7	0.6	3.5	1.2	2.1	2.7
May	0.9	0.7	-0.3	4.1	3.8	0.9	1.6	1.3	0.3
SOUTH AUSTRALIA									
<b>2000</b>									
November	3.2	1.5	2.6	1.4	-0.3	0.4	2.6	1.1	2.0
<b>2001</b>									
February	-0.7	1.1	0.2	1.5	2.3	1.9	0.4	1.5	0.8
May	2.2	0.9	1.4	1.5	0.9	-0.6	2.0	1.0	0.7
WESTERN AUSTRALIA									
<b>2000</b>									
November	1.3	2.1	1.4	1.6	1.4	0.7	1.4	1.8	0.8
<b>2001</b>									
February	1.3	0.9	0.6	0.6	1.0	1.1	0.9	0.9	0.8
May	1.0	0.4	1.3	-1.2	-1.7	1.1	0.4	-0.3	1.8
TASMANIA									
<b>2000</b>									
November	-0.5	-0.7	-1.7	1.1	1.4	0.7	-0.2	-0.3	-1.1
<b>2001</b>									
February	0.1	-0.7	-1.4	2.5	1.2	6.2	0.0	-0.6	2.2
May	1.0	0.3	1.6	3.2	3.6	2.2	3.1	2.3	3.2
NORTHERN TERRITORY									
<b>2000</b>									
November	-0.1	0.9	1.3	2.1	2.2	2.7	0.8	1.5	1.7
<b>2001</b>									
February	0.5	0.6	1.6	1.1	0.6	-1.4	0.9	0.8	-0.2
May	2.0	0.8	-1.0	1.4	1.4	5.0	1.8	0.8	1.5
AUSTRALIAN CAPITAL TERRITORY									
<b>2000</b>									
November	2.5	1.5	1.7	1.6	1.9	2.5	2.0	1.5	1.7
<b>2001</b>									
February	-0.1	0.2	1.7	-0.6	-0.8	3.2	-0.6	-0.6	2.2
May	-0.6	-0.5	-1.5	1.8	1.6	-4.0	0.7	1.1	-2.1

AVERAGE WEEKLY EARNINGS, Quarterly Percentage Change—States and Territories: **Original**

Reference period	MALES.....			FEMALES.....			PERSONS.....		
	Full-time adult ordinary time earnings	Full-time adult total earnings	All males total earnings	Full-time adult ordinary time earnings	Full-time adult total earnings	All females total earnings	Full-time adult ordinary time earnings	Full-time adult total earnings	All employees total earnings
NEW SOUTH WALES									
<b>2000</b>									
November	0.3	-0.1	-0.2	1.9	1.0	-0.4	0.8	0.3	-0.4
<b>2001</b>									
February	-0.3	-0.5	0.8	0.5	0.3	2.6	0.0	-0.2	1.6
May	3.5	3.9	1.5	2.6	2.6	-0.7	3.3	3.6	0.7
VICTORIA									
<b>2000</b>									
November	-0.5	-0.5	-0.5	-1.1	-1.0	-0.8	-0.7	-0.7	-0.8
<b>2001</b>									
February	2.2	1.0	1.4	2.8	2.3	4.6	2.3	1.3	2.8
May	1.3	2.1	1.8	-0.4	-0.3	-2.5	0.7	1.3	-0.2
QUEENSLAND									
<b>2000</b>									
November	-0.9	-2.2	-1.7	0.9	1.1	-2.0	-0.2	-1.0	-2.2
<b>2001</b>									
February	2.6	2.9	3.7	0.4	0.1	4.4	1.8	1.8	4.0
May	0.3	0.8	0.5	3.8	3.7	1.0	1.5	1.7	0.6
SOUTH AUSTRALIA									
<b>2000</b>									
November	2.9	2.4	3.2	2.1	0.8	0.9	2.8	2.0	2.5
<b>2001</b>									
February	-0.1	0.5	0.9	1.8	1.8	2.2	0.5	0.9	1.5
May	1.4	0.5	0.6	0.6	0.5	-1.2	1.4	0.8	0.2
WESTERN AUSTRALIA									
<b>2000</b>									
November	1.0	2.2	1.3	1.2	1.2	-0.1	1.1	1.9	0.7
<b>2001</b>									
February	0.4	0.1	0.7	2.1	2.4	3.4	1.0	0.8	1.9
May	1.1	0.9	1.1	-2.3	-2.5	-0.7	0.2	0.0	1.1
TASMANIA									
<b>2000</b>									
November	0.1	0.6	0.8	2.8	3.7	1.9	0.6	1.3	0.4
<b>2001</b>									
February	0.2	-0.6	-0.8	2.0	0.5	7.2	0.6	-0.5	3.4
May	0.3	0.2	1.1	2.1	2.2	0.2	1.4	1.3	1.5
NORTHERN TERRITORY									
<b>2000</b>									
November	0.3	1.1	2.0	2.2	2.0	1.8	1.2	1.6	2.1
<b>2001</b>									
February	0.5	-0.5	0.9	1.3	0.8	-0.5	0.9	0.1	0.2
May	1.7	2.0	-0.4	0.5	0.7	3.2	1.1	1.3	1.0
AUSTRALIAN CAPITAL TERRITORY									
<b>2000</b>									
November	2.6	2.4	2.3	2.9	3.0	4.5	2.4	2.3	3.0
<b>2001</b>									
February	-0.1	-0.2	2.5	-0.7	-1.2	3.1	-0.6	-0.9	2.6
May	-1.0	-0.8	-3.1	0.9	1.1	-6.3	0.6	0.9	-4.0

AVERAGE WEEKLY EARNINGS, Annual Percentage Change—States and Territories: **Trend**

Reference period	MALES.....			FEMALES.....			PERSONS.....		
	Full-time adult time earnings	Full-time ordinary adult total earnings	All males total earnings	Full-time adult time earnings	Full-time ordinary adult total earnings	All females total earnings	Full-time adult time earnings	Full-time ordinary adult total earnings	All employees total earnings
<b>NEW SOUTH WALES</b>									
<b>May</b>									
1999	4.8	4.6	4.4	5.3	5.2	3.7	5.1	4.9	4.1
2000	6.1	5.3	5.1	2.4	2.9	6.1	4.7	4.3	5.9
2001	4.1	3.5	3.3	5.5	4.8	3.6	4.8	4.2	3.8
<b>VICTORIA</b>									
<b>May</b>									
1999	0.9	0.3	0.4	3.9	4.0	1.9	1.8	1.3	0.2
2000	3.5	2.9	3.7	5.7	5.7	4.0	4.3	3.9	3.5
2001	3.8	3.0	2.3	4.0	3.6	4.4	3.9	3.2	3.1
<b>QUEENSLAND</b>									
<b>May</b>									
1999	1.1	0.2	0.1	1.9	1.5	0.5	1.4	0.6	0.0
2000	3.9	4.0	0.9	4.3	4.5	4.0	4.2	4.4	2.7
2001	4.5	3.9	4.9	6.5	6.6	5.7	5.2	4.8	5.4
<b>SOUTH AUSTRALIA</b>									
<b>May</b>									
1999	2.8	3.6	3.6	0.9	2.3	0.8	2.2	3.2	2.4
2000	4.8	4.7	5.1	4.0	3.5	2.2	4.5	4.2	3.5
2001	6.4	5.3	6.5	6.9	5.8	6.0	7.0	5.9	6.6
<b>WESTERN AUSTRALIA</b>									
<b>May</b>									
1999	1.3	0.5	-2.0	3.8	3.7	2.8	2.2	1.6	0.2
2000	6.9	5.4	5.6	5.9	5.5	5.4	6.6	5.3	5.3
2001	4.0	4.0	4.6	3.2	3.3	4.7	4.0	4.0	5.4
<b>TASMANIA</b>									
<b>May</b>									
1999	1.2	1.1	1.1	1.7	1.6	3.8	1.3	1.2	2.0
2000	5.4	4.5	2.7	4.2	4.9	2.4	4.9	4.5	2.4
2001	0.7	-0.3	-2.0	7.2	6.3	7.9	2.6	1.6	2.7
<b>NORTHERN TERRITORY</b>									
<b>May</b>									
1999	1.1	0.9	-4.0	4.3	4.2	-2.6	2.2	1.9	-2.7
2000	5.8	4.6	10.1	2.8	3.3	5.5	4.9	4.4	7.6
2001	2.9	3.1	3.9	4.5	4.0	4.4	3.8	3.7	3.9
<b>AUSTRALIAN CAPITAL TERRITORY</b>									
<b>May</b>									
1999	-2.4	-1.9	-4.7	1.6	1.8	-6.7	-0.8	-0.4	-6.1
2000	10.7	8.8	11.4	5.9	5.5	9.9	8.1	6.7	9.4
2001	3.4	2.8	4.0	3.8	3.5	5.7	3.1	2.6	4.2

# EXPLANATORY NOTES

## INTRODUCTION

**1** This publication contains estimates of average weekly earnings for May 2001 based on information obtained from a sample survey of employers.

## SCOPE AND COVERAGE

**2** All wage and salary earners who received pay for the reference period are represented in the Survey of Average Weekly Earnings (AWE), except:

- members of the Australian permanent defence forces;
- employees of enterprises primarily engaged in agriculture, forestry and fishing;
- employees in private households employing staff;
- employees of overseas embassies, consulates, etc;
- employees based outside Australia; and
- employees on workers' compensation who are not paid through the payroll.

**3** Also excluded are the following persons who are not regarded as employees for the purposes of this survey:

- casual employees who did not receive pay during the reference period;
- employees on leave without pay who did not receive pay during the reference period;
- employees on strike, or stood down, who did not receive pay during the reference period;
- directors who are not paid a salary;
- proprietors/partners of unincorporated businesses;
- self-employed persons such as subcontractors, owner/drivers, consultants ; and
- persons paid solely by commission without a retainer.

**4** The sample for the AWE survey, like most ABS business surveys, is selected from the ABS Business Register which is primarily based on registrations to the Australian Taxation Office's (ATO) Pay As You Go Withholding (PAYGW) scheme (and prior to 1 June 2000 the Group Employer (GE) scheme). The population is updated quarterly to take account of:

- new businesses;
- businesses which have ceased employing;
- changes in employment levels;
- changes in industry; and
- other general business changes.

The estimates include an allowance for the time it takes newly registered businesses to get on to the survey population.

**5** Businesses which have ceased employing are identified when the ATO cancels their PAYGW registration (or previously their GE registration). In addition, from May 1999, businesses which did not remit under the GE scheme for the previous five quarters were removed from the frame. A similar process will be adopted to remove businesses which do not remit under the PAYGW scheme.

## CHANGES TO ABS BUSINESS REGISTER

**6** The introduction of The New Tax System has a number of significant implications for ABS business statistics. These are discussed in the information paper *ABS Statistics And The New Tax System* (ABS Cat. No. 1358.0). The replacement of the GE registration process by PAYGW registration resulted in a number of changes to the populations for most business surveys. These changes caused a greater than normal rotation of the businesses included in the AWE survey sample between February and May 2001.



## EXPLANATORY NOTES

### SURVEY DESIGN

**7** A sample of approximately 4,700 employer units is selected from the ABS Business Register to ensure adequate State and industry representation. The sample is updated each quarter to reflect changes in the ABS register of businesses. These changes arise from the emergence of new businesses, takeovers and mergers, changes to industry classification, changes in the number of employees, and businesses which have ceased operations. Such updating of the register can contribute to changes in the estimates of average weekly earnings.

**8** The statistical unit for the survey comprises all activities of an employer in a particular State or Territory. Each statistical unit is classified to an industry which reflects the predominant activity of the business in the State or Territory. The statistical units are stratified by State, sector, industry, employment size and an equal probability sample is selected from each stratum.

**9** Since February 1992, survey data for a number of Commonwealth government and Australian Capital Territory government departments have been collected electronically. From November 1993, survey data for a number of Northern Territory government departments and agencies have also been collected electronically.

### NOTES ON ESTIMATES

**10** Average weekly earnings statistics represent average gross (before tax) earnings of employees and do not relate to average award rates nor to the earnings of the 'average person'. Estimates of average weekly earnings are derived by dividing estimates of weekly total earnings by estimates of number of employees. Changes in the averages may be affected not only by changes in the level of earnings of employees but also by changes in the overall composition of the wage and salary earner segment of the labour force.

**11** There are several aspects which can contribute to compositional changes, including variations over time in the proportions of full-time, part-time, casual and junior employees; variations in the occupational distribution within and across industries; variations in the distribution of employment between industries; and variations in the proportion of male and female employees. Such effects may apply differently within different States and Territories, and over time.

### ROUNDING

**12** Estimates of average weekly earnings are rounded to the nearest 10 cents.

**13** Percentage changes are calculated on the actual values and may differ from calculations based on rounded estimates.

### COMPARABILITY OF RESULTS

**14** It is important to recognise that whilst average employee earnings can be derived from the Survey of Employment and Earnings (SEE) published in *Wage and Salary Earners, Australia* (Cat. no. 6248.0), these average earnings will not be comparable with those produced from the AWE survey. The SEE collects the sum of employee earnings paid in all pay periods ending in a calendar quarter, including payments to employees which are excluded from the scope of the AWE survey such as retrospective pay, pay in advance, leave loadings and severance, termination and redundancy payments.

**15** Whilst the quarterly earnings produced by the SEE are affected by the varying number of pay periods from quarter to quarter, the AWE survey results are unaffected because of the selection of a specified pay period in the middle of a quarter. The SEE earnings data are also more subject to seasonal variations, particularly in the December and March quarters, due to the incidence of holidays taken in January being paid in advance and the earnings being reported in December quarter figures.

## EXPLANATORY NOTES

### HISTORICAL SERIES

**16** The AWE series was introduced in August 1981 when it replaced the average weekly earnings series based principally on information from payroll tax returns. Revised estimates of average weekly earnings for the period August 1981 to November 1983 were included in *Average Weekly Earnings, States and Australia, March Quarter 1984* (Cat. no. 6302.0) published on 12 July 1984. Users who need a measure of the movement in earnings for a period which spans both the payroll tax based and employer survey series should refer to Table 3 in that publication which presents both series linked to a common index base (August 1981 = 100.0).

### SEASONAL ADJUSTMENT

**17** Seasonal adjustment is a means of removing the estimated effects of normal seasonal variation from the series so that the effects of other influences can be more clearly recognised. Seasonal adjustment does not aim to remove the irregular or non-seasonal influences which may be present in any particular series. Influences that are volatile or unsystematic can still make it difficult to interpret the movement of the series even after adjustment for seasonal variation. This means that quarter-to-quarter movements of seasonally adjusted estimates may not be reliable indicators of trend behaviour.

**18** The series have been seasonally adjusted from September 1983 and the historical series can be made available on request. The seasonal factors are reviewed annually to take account of each additional year's original data. The most recent review, using original estimates to November 2000, took place in time for inclusion in the February 2001 estimates.

**19** Details about the method of seasonal adjustment of these series are available on request.

### TREND ESTIMATES

**20** The ABS considers that trend estimates provide a more reliable guide to the underlying direction of the data, and are more suitable than either the seasonally adjusted or original estimates for most business decisions and policy advice.

**21** The trend estimates in this publication, obtained by dampening out the irregular component from the seasonally adjusted series, are calculated using a centred 7-term Henderson moving average of the seasonally adjusted series. Estimates for the three most recent quarters cannot be calculated using this centred average method; instead an asymmetric average is used. This can lead to revisions in the trend estimates for the last three quarters when data become available for later quarters. Revisions of trend estimates will also occur with revisions to the original data and re-estimation of seasonal adjustment factors.

**22** If a series is highly volatile then the trend estimates will be subject to greater revision for the latest few quarters as new data become available. However, it is important to note that this does not make the trend series inferior to the seasonally adjusted or original series.

**23** For more information, see *A Guide to Interpreting Time Series – Monitoring 'Trends': an Overview* (Cat. no. 1348.0) or contact the Assistant Director, Time Series Analysis on Canberra 02 6252 6345 or at [timeseries@abs.gov.au](mailto:timeseries@abs.gov.au).

**24** Three feature articles which have appeared in the ABS monthly publication *Australian Economic Indicators* (Cat. no. 1350.0) may also be of interest:

- Picking Turning Points in the Economy (April 1991)
- Smarter Data Use (March 1992); and
- Direct Movement Estimator for the Survey of Average Weekly Earnings (August 1998)

## EXPLANATORY NOTES

### FURTHER INFORMATION

**25** Background information about the average weekly earnings series is provided in *Information Paper: New Statistical Series: Employment, Average Weekly Earnings, Job Vacancies and Overtime* (Cat. no. 6256.0) published 21 June 1984. Copies are available on request.

### RELATED PUBLICATIONS

**26** The following publications contain related information and are available from ABS Bookshops:

- *Average Weekly Earnings, Australia 1941–1990* (Cat. no. 6350.0)
- *Employee Earnings and Hours, Australia* (Cat. no. 6306.0)—issued biennially
- *Wage Cost Index, Australia* (Cat. no. 6345.0)—issued quarterly
- *Job Vacancies, Australia* (Cat. no. 6354.0)—issued quarterly
- *Information Paper: New Statistical Series: Employment, Average Weekly Earnings, Job Vacancies and Overtime* (Cat. no. 6256.0)
- *Occasional Paper No 1986/1: Statistics on Wages, Earnings, Income and Labour Costs – A Guide to Their Concepts, Measurement and Usage*
- *Wage and Salary Earners, Australia* (Cat. no. 6248.0)—issued quarterly
- *Labour Force, Australia* (Cat. no. 6203.0)—issued monthly
- *Labour Force Projections, Australia 1999–2016* (Cat. no. 6260.0)
- *Employee Earnings, Benefits and Trade Union Membership* (Cat. no. 6310.0)—issued annually

**27** Current publications produced by the ABS are listed in the *Catalogue of Publications and Products, Australia* (Cat. no. 1101.0). The ABS also issues, on Tuesdays and Fridays, a *Release Advice* (Cat. no. 1105.0) which lists publications to be released in the next few days. The Catalogue and Release Advice are available from any ABS office or from the ABS website [www.abs.gov.au](http://www.abs.gov.au).

### ABS DATA AVAILABLE ON REQUEST

**28** As well as the statistics included in this and related publications, the ABS may have other relevant data available on request. Details of additional data available are shown in Special Data Service on page 32 of this publication.

## TECHNICAL NOTES

### RELIABILITY OF ESTIMATES

**1** As the estimates in this publication are based on information relating to a sample of employers, they are subject to sampling variability. That is, they may differ from the estimates that would have been produced if the information had been obtained from all employers. This difference, called *sampling error*, should not be confused with inaccuracy that may occur because of imperfections in reporting by respondents or in processing by the ABS. Such inaccuracy is referred to as *non-sampling error* and may occur in any enumeration whether it be a full count or a sample. Efforts have been made to reduce non-sampling error by careful design of questionnaires, detailed checking of returns and quality control of processing.

**2** The sampling error associated with any estimate can be estimated from the sample results. One measure of sampling error is given by the *standard error* which indicates the degree to which an estimate may vary from the value which would have been obtained from a full enumeration (the 'true value'). There are about two chances in three that a sample estimate differs from the true value by less than one standard error, and about nineteen chances in twenty that the difference will be less than two standard errors.

**3** An example of the use of a standard error is as follows. If the estimated average earnings was \$500.00 with a standard error of \$4.00, then there would be about two chances in three that a full enumeration would have given an estimate in the range \$496.00 to \$504.00 and about nineteen chances in twenty that it would be in the range \$492.00 to \$508.00.

**4** An example of the use of a standard error for a quarterly change estimate is as follows. If the estimate of quarterly change between two quarters was \$1.50 and the standard error on this estimate was \$1.00, then there would be about two chances in three that a full enumeration would have given a quarterly change estimate in the range +\$0.50 to +\$2.50 and about nineteen chances in twenty that it would be in the range -\$0.50 to +\$3.50.

**5** Quarterly movements in estimates of average weekly earnings are considered to be statistically significant where they exceed two standard errors.



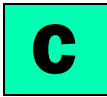
AVERAGE WEEKLY EARNINGS, Standard Errors—States and Territories

States and Territories	MALES.....			FEMALES.....			PERSONS.....		
	<i>Full-time adult ordinary time earnings</i>	<i>Full-time adult total earnings</i>	<i>All males total earnings</i>	<i>Full-time adult ordinary time earnings</i>	<i>Full-time adult total earnings</i>	<i>All females total earnings</i>	<i>Full-time adult ordinary time earnings</i>	<i>Full-time adult total earnings</i>	<i>All employees total earnings</i>
LEVEL (\$)									
New South Wales	17.20	17.40	16.00	10.80	10.90	10.20	13.10	13.20	11.60
Victoria	10.80	11.10	12.20	10.40	10.80	12.50	8.50	9.00	11.90
Queensland	14.60	14.90	15.50	11.30	10.90	9.80	10.80	11.00	11.10
South Australia	19.90	21.10	18.50	13.50	12.70	13.30	14.80	15.60	14.10
Western Australia	27.60	30.10	31.40	13.30	13.60	14.30	22.30	24.10	22.50
Tasmania	15.10	15.70	19.20	12.80	13.30	12.00	12.00	12.50	14.20
Northern Territory	25.00	24.70	24.30	11.90	12.30	12.10	16.20	16.40	15.30
Australian Capital Territory	22.80	23.10	20.10	13.20	13.20	22.50	12.80	13.10	17.30
<b>Australia</b>	<b>7.70</b>	<b>7.90</b>	<b>7.70</b>	<b>5.30</b>	<b>5.30</b>	<b>5.30</b>	<b>5.90</b>	<b>6.10</b>	<b>5.90</b>
QUARTERLY MOVEMENT (\$)									
New South Wales	14.80	14.70	15.90	9.70	9.70	9.40	11.50	11.50	10.90
Victoria	10.40	10.70	12.10	9.10	9.40	11.10	8.40	8.80	10.70
Queensland	13.80	14.00	12.70	9.70	9.60	9.70	10.10	10.20	10.30
South Australia	15.70	18.60	15.80	12.50	9.80	9.80	11.30	11.70	12.20
Western Australia	16.80	17.20	18.80	11.60	12.20	11.20	13.50	14.00	15.60
Tasmania	9.20	9.80	11.10	12.10	12.90	15.40	7.40	8.30	10.90
Northern Territory	15.40	15.10	16.30	9.60	10.20	13.00	10.20	10.40	12.90
Australian Capital Territory	17.60	19.00	22.70	11.70	12.80	30.60	15.00	17.10	20.00
<b>Australia</b>	<b>6.70</b>	<b>6.70</b>	<b>7.10</b>	<b>4.80</b>	<b>4.80</b>	<b>5.00</b>	<b>5.20</b>	<b>5.20</b>	<b>5.40</b>



AVERAGE WEEKLY EARNINGS, Standard Errors—Sector

Sector	MALES.....			FEMALES.....			PERSONS.....		
	<i>Full-time adult ordinary time earnings</i>	<i>Full-time adult total earnings</i>	<i>All males total earnings</i>	<i>Full-time adult ordinary time earnings</i>	<i>Full-time adult total earnings</i>	<i>All females total earnings</i>	<i>Full-time adult ordinary time earnings</i>	<i>Full-time adult total earnings</i>	<i>All employees total earnings</i>
	LEVEL (\$)								
Private sector	9.50	9.70	9.20	7.10	7.10	6.40	7.60	7.80	7.20
Public sector	5.60	5.50	5.70	1.60	1.60	4.20	3.30	3.20	4.50
<b>All sectors</b>	<b>7.70</b>	<b>7.90</b>	<b>7.70</b>	<b>5.30</b>	<b>5.30</b>	<b>5.30</b>	<b>5.90</b>	<b>6.10</b>	<b>5.90</b>
	QUARTERLY MOVEMENT (\$)								
Private sector	8.20	8.30	8.40	6.50	6.50	6.20	6.70	6.70	6.60
Public sector	3.50	3.50	4.40	1.60	1.60	4.20	2.20	2.10	4.20
<b>All sectors</b>	<b>6.70</b>	<b>6.70</b>	<b>7.10</b>	<b>4.80</b>	<b>4.80</b>	<b>5.00</b>	<b>5.20</b>	<b>5.20</b>	<b>5.40</b>



AVERAGE WEEKLY EARNINGS, Standard Errors—Industry

Industry	MALES.....			FEMALES.....			PERSONS.....		
	<i>Full-time adult ordinary time earnings</i>	<i>Full-time adult total earnings</i>	<i>All males total earnings</i>	<i>Full-time adult ordinary time earnings</i>	<i>Full-time adult total earnings</i>	<i>All females total earnings</i>	<i>Full-time adult ordinary time earnings</i>	<i>Full-time adult total earnings</i>	<i>All employees total earnings</i>
	LEVEL (\$)								
Mining	41.20	38.70	39.40	42.70	44.90	32.40	40.10	39.30	39.30
Manufacturing	11.40	13.50	12.80	12.80	14.20	17.20	10.50	12.40	13.00
Electricity, gas and water supply	11.30	11.80	13.50	5.50	6.00	5.40	9.90	10.20	10.80
Construction	19.10	20.80	23.40	39.80	40.60	31.80	19.60	21.80	24.10
Wholesale trade	33.90	33.40	31.70	30.00	29.90	27.60	29.40	29.00	26.10
Retail trade	12.10	17.00	15.00	10.60	10.40	9.50	9.20	12.50	11.90
Accommodation, cafes and restaurants	21.60	21.90	17.20	15.40	15.40	12.90	16.60	16.70	13.70
Transport and storage	18.00	17.90	20.70	23.50	25.90	28.30	16.70	17.70	20.90
Communication services	12.60	13.80	14.60	9.20	9.60	5.70	8.40	9.10	8.60
Finance and insurance	37.10	37.10	37.90	14.10	13.90	15.00	23.50	23.40	23.00
Property and business services	35.90	36.20	36.30	21.10	21.10	23.10	26.00	26.60	29.30
Government administration and defence	11.80	11.30	11.80	4.60	4.70	9.40	7.60	7.20	9.80
Education	5.20	5.20	12.50	5.30	5.10	9.80	4.70	4.60	10.00
Health and community services	49.70	51.30	33.50	11.00	11.30	8.30	20.40	20.90	9.90
Cultural and recreational services	39.50	41.40	37.40	19.00	19.60	26.50	26.50	27.70	29.70
Personal and other services	23.00	24.40	25.00	27.30	28.30	31.50	19.20	20.40	28.30
<b>All industries</b>	<b>7.70</b>	<b>7.90</b>	<b>7.70</b>	<b>5.30</b>	<b>5.30</b>	<b>5.30</b>	<b>5.90</b>	<b>6.10</b>	<b>5.90</b>

Industry	QUARTERLY MOVEMENT (\$)								
	<i>Full-time adult ordinary time earnings</i>	<i>Full-time adult total earnings</i>	<i>All males total earnings</i>	<i>Full-time adult ordinary time earnings</i>	<i>Full-time adult total earnings</i>	<i>All females total earnings</i>	<i>Full-time adult ordinary time earnings</i>	<i>Full-time adult total earnings</i>	<i>All employees total earnings</i>
Mining	29.40	28.00	31.30	38.90	40.60	37.90	29.30	29.00	32.70
Manufacturing	8.50	10.20	10.20	10.60	12.70	11.30	7.80	9.60	9.90
Electricity, gas and water supply	11.60	10.60	12.60	6.20	6.20	7.40	10.40	9.60	11.00
Construction	23.00	26.80	29.60	25.30	25.70	23.60	20.70	24.10	25.60
Wholesale trade	32.00	31.30	29.90	25.50	24.80	25.30	27.40	26.60	25.00
Retail trade	15.10	15.80	12.20	13.10	13.70	8.00	13.30	13.90	9.60
Accommodation, cafes and restaurants	18.70	22.00	20.40	15.40	16.20	12.50	15.30	18.10	14.90
Transport and storage	13.70	14.10	17.00	17.20	19.60	21.10	12.90	14.30	16.10
Communication services	4.60	4.90	5.40	6.10	6.30	5.80	4.60	4.90	5.40
Finance and insurance	50.70	50.70	47.70	16.10	16.10	15.30	32.70	32.50	27.80
Property and business services	27.00	25.30	30.30	17.40	16.60	22.40	20.00	18.80	24.90
Government administration and defence	7.80	7.50	8.60	4.80	4.80	8.30	6.00	5.80	8.30
Education	7.50	7.50	11.40	6.10	6.00	7.70	5.90	5.90	8.00
Health and community services	49.10	49.50	35.90	10.40	10.50	9.00	18.80	19.10	10.60
Cultural and recreational services	33.30	33.50	72.60	25.50	25.30	35.20	23.10	23.00	40.00
Personal and other services	25.00	25.40	14.70	22.90	23.80	14.60	17.20	18.00	13.80
<b>All industries</b>	<b>6.70</b>	<b>6.70</b>	<b>7.10</b>	<b>4.80</b>	<b>4.80</b>	<b>5.00</b>	<b>5.20</b>	<b>5.20</b>	<b>5.40</b>

## SPECIAL DATA SERVICE

### INTRODUCTION

As well as the statistics included in this publication, other data are available from the Survey of Average Weekly Earnings on request. These data can be produced for clients as customised reports. The variables are listed below.

### HOW TO PLACE AN ORDER

Firstly, determine the variables (see following) that you require estimates for. A covering letter indicating these requirements and the intended uses of the data requested should be addressed to:

Labour Employer Surveys Section  
Australian Bureau of Statistics  
GPO Box K881  
PERTH WA 6842

### CONTACT OFFICER

If you wish to discuss individual requests, especially in regard to reliability of estimates for particular cross-classifications and the charges involved, please telephone Glynis Orrell on Perth 08 9360 5304.

### VARIABLES

The following variables are available from this survey.

Note: The more variables included in any one tabulation the more likely it is that confidentiality provisions associated with the data will be invoked and some data suppressed.

Type of estimate	Original Seasonally adjusted Trend
Composition of earnings	Full-time adult ordinary time earnings Full-time adult total earnings All employees total earnings
States and Territories	New South Wales Victoria Queensland South Australia Western Australia Tasmania Northern Territory Australian Capital Territory
Sector	Private sector Public sector
Sex	Males Females Persons
Industry (ANZSIC classification)	ANZSIC Division (1-digit code) —as shown in table 10 ANZSIC Sub-division (2-digit code) ANZSIC Group (3-digit code) ANZSIC Class (4-digit code)



## G L O S S A R Y

<b>Adult employees</b>	Adult employees are those employees 21 years of age or over and those employees who, although under 21 years of age, are paid at the full adult rate for their occupation.
<b>Average Weekly Earnings</b>	Average Weekly Earnings statistics represent average gross (before tax) earnings of employees and do not relate to average award rates nor to the earnings of the 'average person'. Estimates of average weekly earnings are derived by dividing estimates of weekly total earnings by estimates of number of employees.
<b>Employees</b>	Employees refer to all wage and salary earners (as defined in paragraphs 2 and 3 of the Explanatory Notes) who received pay for any part of the reference period.
<b>Full-time employees</b>	Full-time employees are permanent, temporary and casual employees who normally work the agreed or award hours for a full-time employee in their occupation and received pay for any part of the reference period. If agreed or award hours do not apply, employees are regarded as full-time if they ordinarily work 35 hours or more per week.
<b>Reference period</b>	Reference period for the survey refers to the last pay period ending on or before the third Friday of the middle month of the quarter. Where a pay period is fortnightly or monthly, etc., the employer is requested to report only one week's proportion. The reference date for the current survey is 18 May 2001.
<b>Sector</b>	Public sector includes all local government authorities and government departments, agencies and authorities created by, or reporting to the Commonwealth and State Parliaments. All remaining employees are classified as private sector.
<b>Weekly ordinary time earnings</b>	Weekly ordinary time earnings refers to one week's earnings of employees for the reference period attributable to award, standard or agreed hours of work. It is calculated before taxation and any other deductions (e.g. superannuation, board and lodging) have been made. Included in ordinary time earnings are award, workplace and enterprise bargaining payments, and other agreed base rates of pay, over award and overagreed payments, penalty payments, shift and other allowances; commissions and retainers; bonuses and similar payments related to the reference period; payments under incentive or piecework; payments under profit sharing schemes normally paid each pay period; payment for leave taken during the reference period; all workers' compensation payments made through the payroll; and salary payments made to directors. Excluded are overtime payments, retrospective pay, pay in advance, leave loadings, severance, termination and redundancy payments, and other payments not related to the reference period.
<b>Weekly total earnings</b>	Weekly total earnings of employees is equal to weekly ordinary time earnings plus weekly overtime earnings.





## FOR MORE INFORMATION...

- INTERNET* **www.abs.gov.au** the ABS web site is the best place to start for access to summary data from our latest publications, information about the ABS, advice about upcoming releases, our catalogue, and Australia Now—a statistical profile.
- LIBRARY* A range of ABS publications is available from public and tertiary libraries Australia-wide. Contact your nearest library to determine whether it has the ABS statistics you require, or visit our web site for a list of libraries.
- CPI INFOLINE* For current and historical Consumer Price Index data, call 1902 981 074 (call cost 77c per minute).
- DIAL-A-STATISTIC* For the latest figures for National Accounts, Balance of Payments, Labour Force, Average Weekly Earnings, Estimated Resident Population and the Consumer Price Index call 1900 986 400 (call cost 77c per minute).

## INFORMATION SERVICE

Data which have been published and can be provided within five minutes are free of charge. Our information consultants can also help you to access the full range of ABS information—ABS user-pays services can be tailored to your needs, time frame and budget. Publications may be purchased. Specialists are on hand to help you with analytical or methodological advice.

- PHONE* **1300 135 070**
- EMAIL* **client.services@abs.gov.au**
- FAX* 1300 135 211
- POST* Client Services, ABS, GPO Box 796, Sydney 1041

## WHY NOT SUBSCRIBE?

ABS subscription services provide regular, convenient and prompt deliveries of ABS publications and products as they are released. Email delivery of monthly and quarterly publications is available.

- PHONE* 1300 366 323
- EMAIL* subscriptions@abs.gov.au
- FAX* 03 9615 7848
- POST* Subscription Services, ABS, GPO Box 2796Y, Melbourne 3001



2630200005017  
ISSN 1444-903X

RRP \$20.00